

**Periodic Assessment Test
Mathematics**

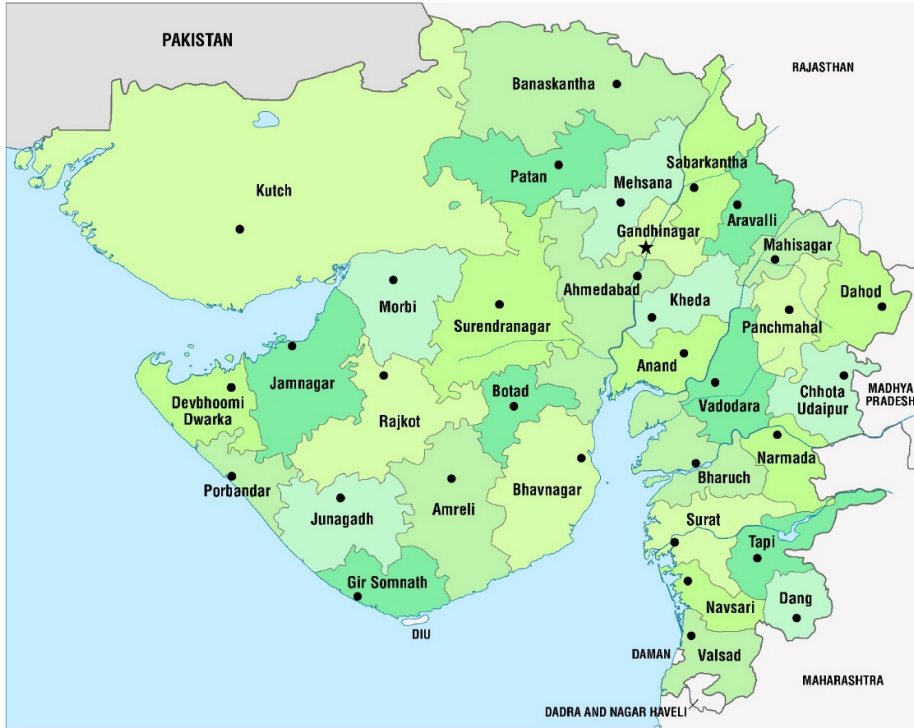
Std : 5
Time : 1 Hour

December -2020
Marks : 25

LO Answers the question on the basis of the map.

Q.1 Look at the map and write the answer of the questions given below.

5

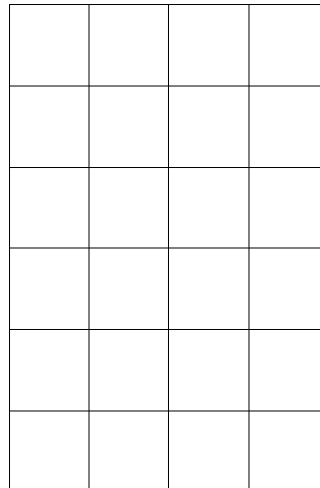
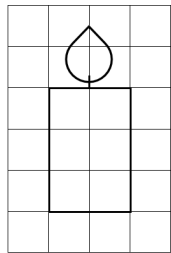


- 1) Which districts will you have to cross from Ahmedabad to Narmada?
- 2) In which direction is Arvalli district situated from Kutch?
- 3) Which district shares it's border with Morbi?
- 4) Which district is located at the north of Patan?
- 5) Write the names of two districts whose boundries touch the coastline.

LO Draws pictures and maps in small & large formats using scale .

Q.2 A picture of a candle is drawn on the measured grid of 1 cm. Draw the same picture on the measured grid of 2 cm. How much bigger is your drawn picture than the original picture?

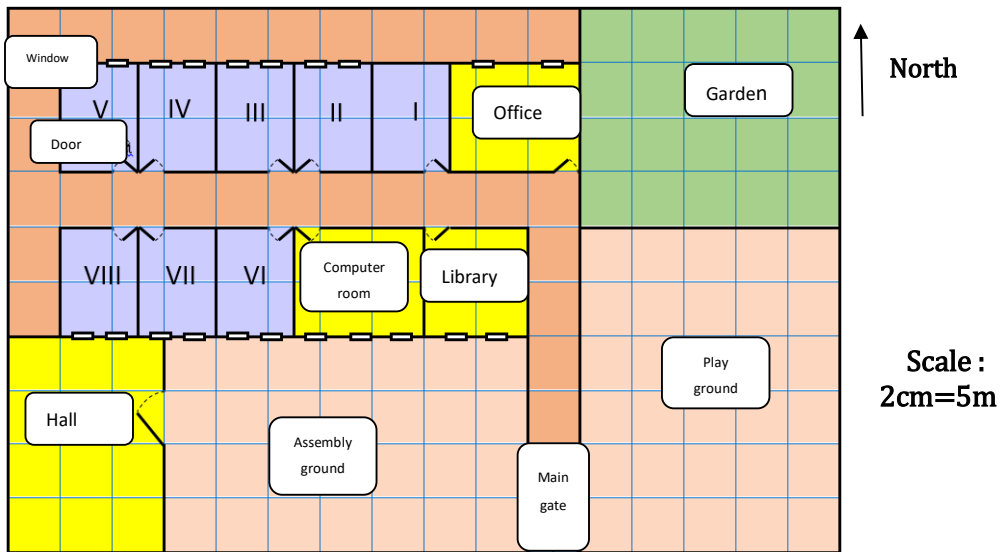
5



LO Indicates / shows the location of an object or place on the basis of directions, symbols, signs in plain maps of home, classroom and school.

Q.3 Look carefully at the given map and answer the questions.

5



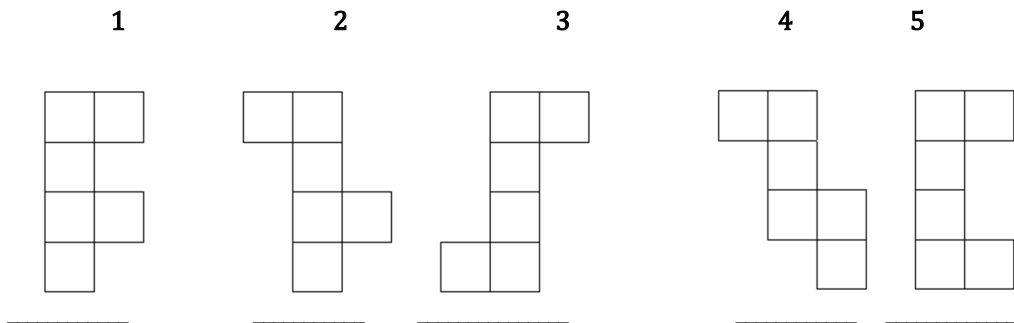
Use the squares to find out:

- 1) What is the length and width of the library.
- 2) What is at the east side of the office?
- 3) What is the width of the garden?
- 4) Which class is located at the opposite side of std - 7.
- 5) Whose area is more, out of the assembly ground and play ground?

LO Draws conical, cylindrical and cube and makes it with the help of given grid.

Q.4 Look carefully at the shapes given below and write 'yes' below the shapes which forms a cube and 'No' below the shapes which do not forms a cube.

5



LO Draws conical, cylindrical and cube and makes it with the help of given grid.

Q.5 A. Draw an actual picture of cube.

5

B. Draw an actual picture of the box given below.

